



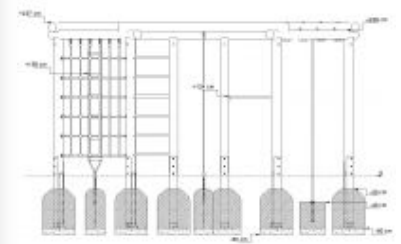
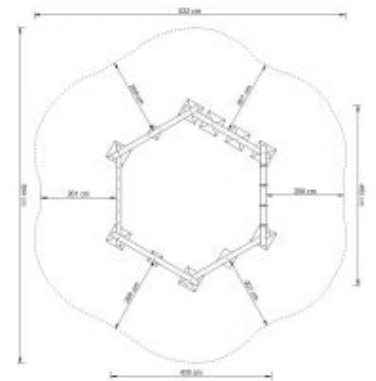
# THEOBALD



## GENERAL INFORMATION

- Dimensions:** Ø4,80 x 2,37
- Total height:** 2,37 m
- Free fall height:** 2,37 m
- Falling area (M):** Ø7,90
- Falling area (QM):** 49,50 qm
- Age group:** 4 and older
- Catalog page:** Page 96

This combination climber has a multitude of different play elements. Strong roundwood uprights support



Erzeugt am 23.07.2025 um 13:08:28 | PLAYPARC®