

Product: GT PB

Art. Nr.: see components

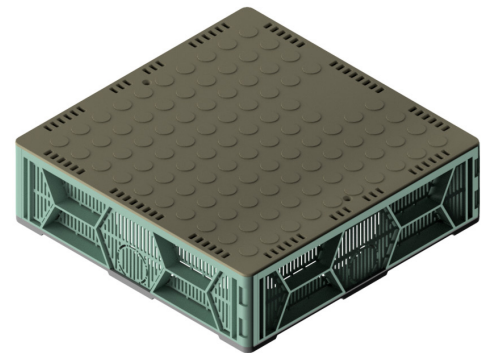
Product description: inspection and water outlet box

APPLICATION

Inspection box for green-, gravel roofs and for paved surfaces. Compatible for syphonic and for gravitation drainage systems. Modularly extendable in 1-5-10 cm steps.

ADVANTAGES

- External waterproofing contact area – application in corner and parapet wall areas
- On-site drill opening on the cover – downpipe outlet
- Drainage openings and predetermined breaking lines – connection to drainage channels and drainage pipes
- Modular system – extendable in 1-5-10 cm steps, from 20 cm total product height base plate must be used as intermediate stiffening element between the extension levels
- Material made of durable and UV-radiation stable recycling polymers – after working life span can be recycled again
- Economical and sparing to natural resources – dismantled delivery, economical transport
- Private labelling – custom logo space on the cover
- Wind drift proof – cover safely secured by stainless steel screws
- Terrace usage – galvanised metal grid for terrace outlets



SYSTEM COMPONENTS

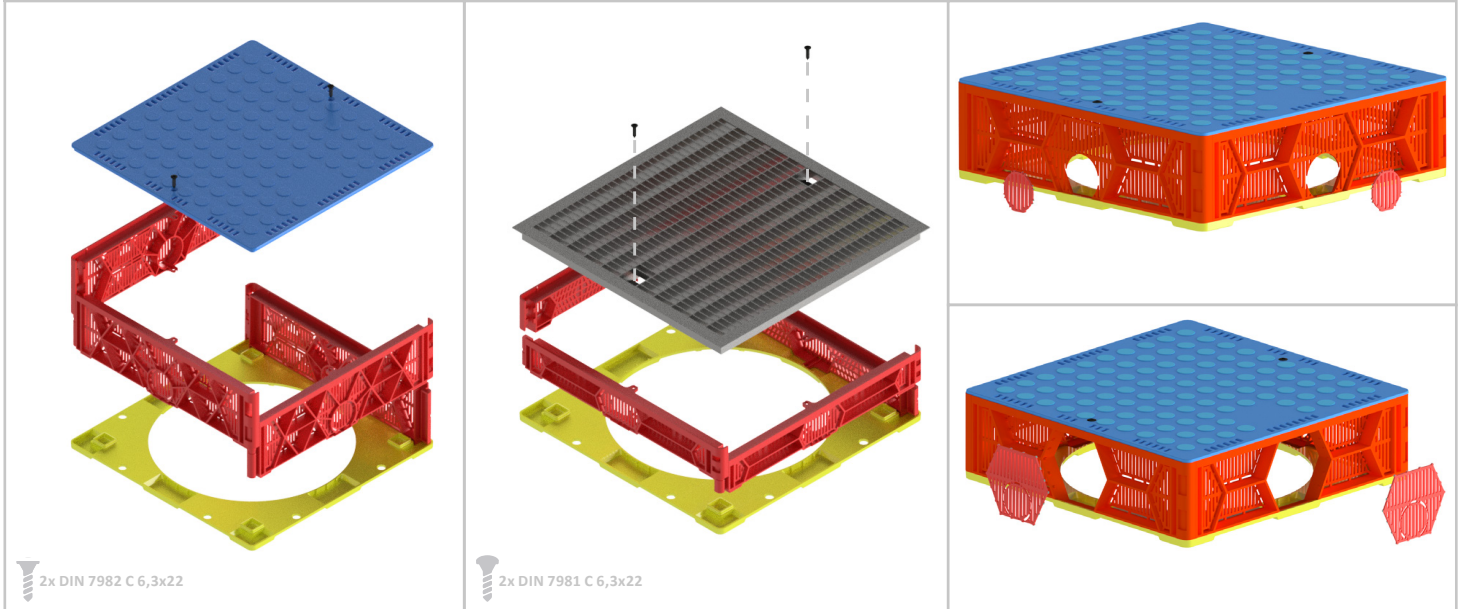
Article number	Component	Description
KZGTIB310010	GT PBF	Base and reinforcement plate PP 400x400
KZGTIB310020	GT PBU50	Sidewall PP 50 mm
KZGTIB310030	GT PBU100	Sidewall PP 100 mm
KZGTIB310058	GT PBT	Cover PP 400x400
KZGTIB310090	GT PBGT	Grid VZ 400x400

Product: GT PB

Art. Nr.: see components

Product description: inspection and water outlet box

USAGE



REINFORCEMENT

